



AERIAL WORK PLATFORMS

PT 180

ISOLI S.p.A. via Boschi, 44 35014 Fontaniva (Padova) ITALY
tel. +39.049/9438611 fax. +39.049/9438600 / p iva 0020297 028 1

Truck-mounted aerial lift work platform

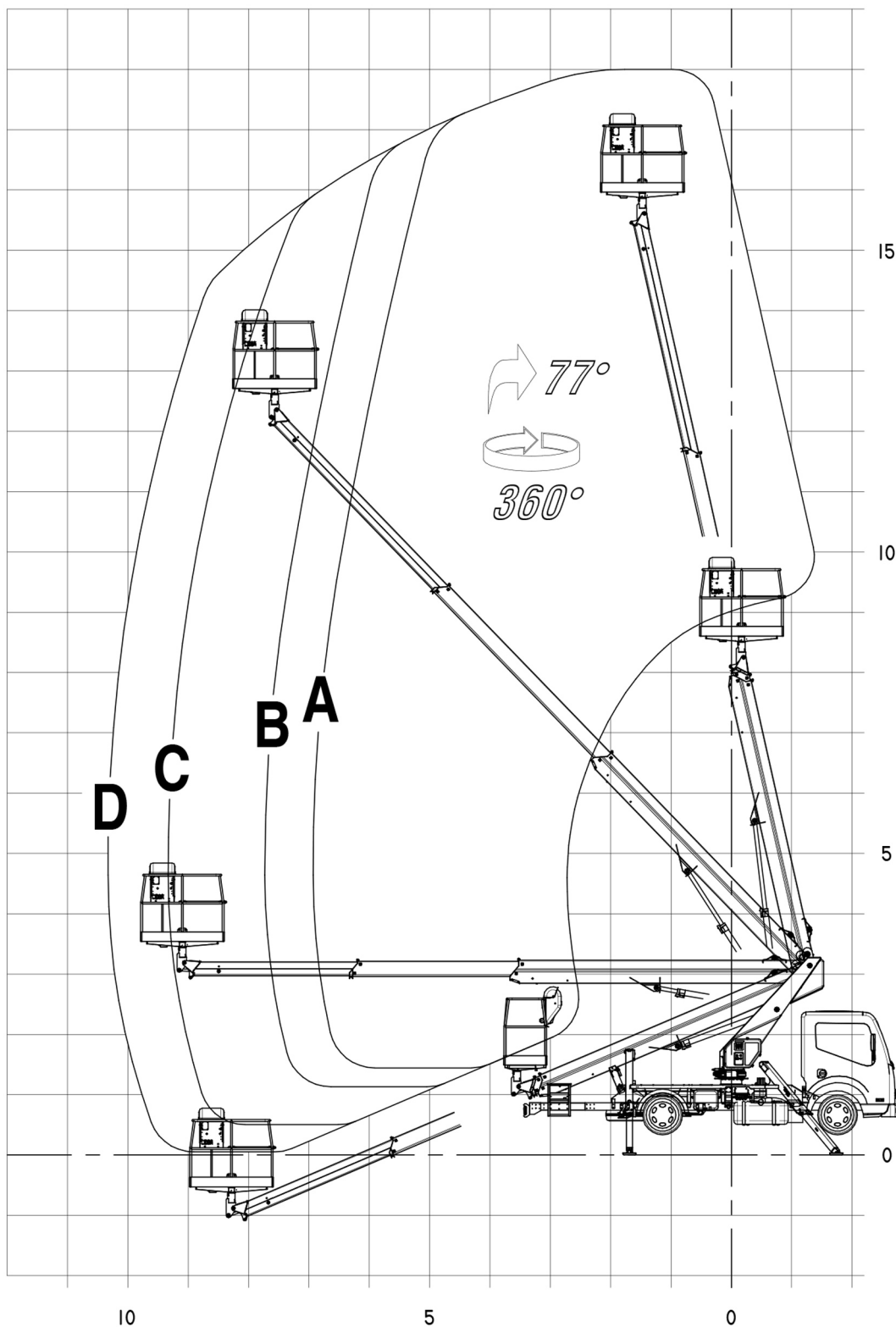






Specifications

PERFORMANCE u Max working height: 18,00 m. u Max working outreach: 12,00 m with kg 80 in basket (max outreach with suitable chassis and stabilization). u Safe working load: 250 kg with N°. 2 persons. To be installed on vehicles from 3,5 t. GVW **GENERAL FEATURES:** - Subframe with 4 outriggers (type__A+A_) hydraulically operated by a distributor on the frame. - Aluminum cover slip of the frame. - Emergency lowering with hand pump operated from the platform. - Ladder access to the basket. - Mudguards on the rear wheels. - Turret rotation of 400 ° in the shape of the vehicle. - 3-section telescopic boom extension with a hydraulic cylinder double acting and referral chains for the proportional extension. - Locking / balancing valves on all cylinders. - Solenoid valves for management control stations and limiter. - Electronic limiting device (proportional outreach) in double security with lights - Aluminium cage dim. : 1400 x 710 x 1100 mm (without load control). - - Hydraulic basket rotation of + / - 90 ° with centering control and light. - Automatic leveling of the basket by double hydraulic jack. - Positioning on the floor of the basket. - Proportional hydraulic controls with ability to perform multiple operations simultaneously. - Dual control (basket / turret) with device against simultaneous operation. - On both panels there are controls for start/stop vehicle engine, anticollision button and indicator lights for basic use and for upperstructure (collision, break the chains, moment limiter and load limiters where requested). On turret panel there are also hour counter, device for outriggers (stabilized machine and outriggers not in running position) and diagnostic lights. - Safety interlock between the superstructure and stabilizers. - Anti-collision system between boom/cabin, boom/basket and front outriggers/cabin door (where necessary). Hydraulic system with high pressure filter and a high level of filtration in the pressure line. - Electrical outlet from 220V to edge basket full of life-saving and differential. - Magnetic rotating light. - installation on chassis - PTO - pump. - Lamp in the cabin for stabilizers or booms not in running position. - Painting of the equipment (one colour), subframe painted in black RAL 9005 - EC mark

DIAGRAMMA DI LAVORO
WORKING DIAGRAM

METRI
METERS



- A= 
MAX
250 kg
- B= 
MAX
200 kg
- C= 
MAX
120 kg
- D= 
MAX
80 kg

